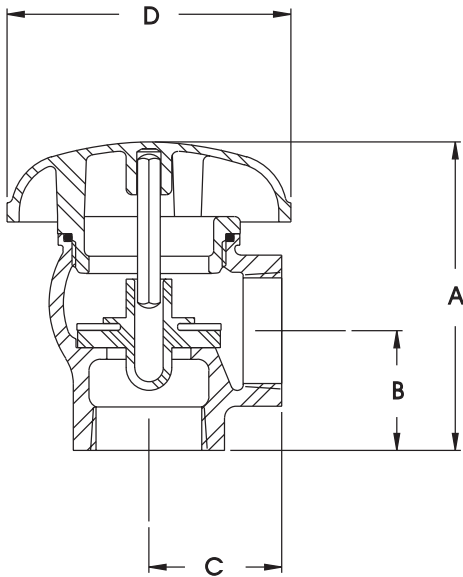


Dimensions and Weights

(U.S. - Inches)					
SIZE	A	B	C	D	NET WT. (Lbs.)
1/2	2 1/2	1 1/4	1 1/4	2 1/2	3/4
3/4	2 7/8	1 3/8	1 3/8	2 1/2	1
1	3 1/2	1 3/8	1 1/2	3 1/4	1 3/4
1 1/4	3 7/8	1 5/8	2	4	2 1/2
1 1/2	4 5/8	2 1/8	2 1/8	4 1/2	3 3/4
2	5 3/8	2 1/8	2 1/8	5 1/2	5 1/4

(Metric - MM)					
SIZE	A	B	C	D	NET WT. (Kgs.)
15	63.5	31.8	31.8	63.5	0.3
20	73.0	34.9	34.9	63.5	0.5
25	88.9	34.9	38.1	82.6	0.8
30	98.4	41.3	50.8	101.6	1.1
35	117.5	54.0	54.0	114.3	1.7
40	136.5	54.0	54.0	139.7	2.4



Characteristics and Materials

Maximum working pressure	150 PSI (1034 KPa)
Hydrostatic test pressure	150 PSI (1034 KPa)
Temperature range	710 (1"-2") 32°F to 110°F 715 (1/2"-3/4") 32°F to 180°F
Fluid	Water
End detail	1PT thread ANSI B2.1
Valve body	Bronze
Elastomers	Nitrile
Poppet	Acetal/Polypropylene 1/2, 3/4, 1, 1 1/4, 1 1/2, 2

Flow Curves

Flow curves as established by the Twining Labs, Inc.

