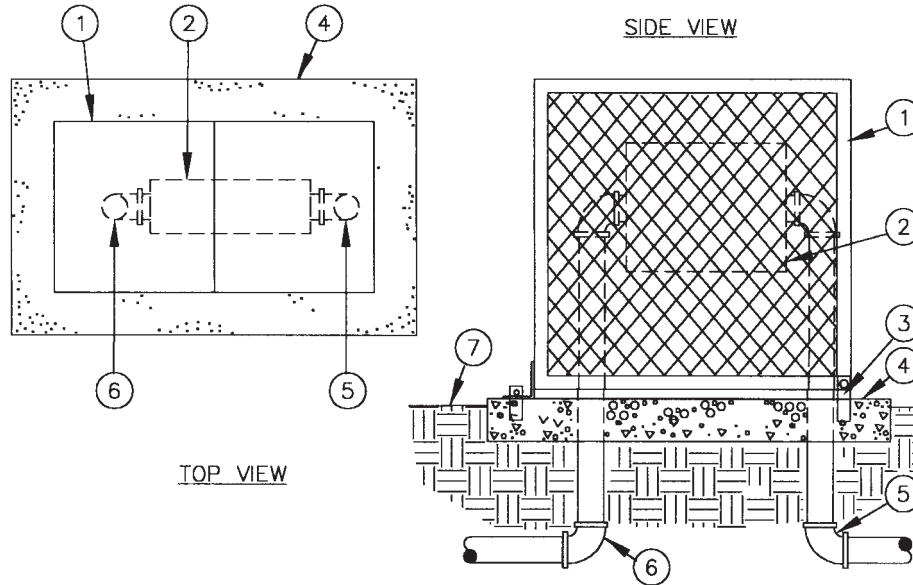


**Models: BC-30CR
& BC-45CR**

INSTALLATION DETAILS



- | | |
|---------------------------------------------------------------------------------------------------|------------------------------|
| 1. Expanded Metal Backflow Enclosure | 5. Water Service Inlet Pipe |
| 2. Backflow Preventer | 6. Water Service Outlet Pipe |
| 3. Anchor Rod (typical) | 7. Finish Grade |
| 4. Poured Concrete Base – 6” minimum thickness – extend 4” beyond outside dimensions of enclosure | |

SPECIFICATIONS

The backflow cover shall be of a vandal resistant nature manufactured of formed and expanded metal, coated with a performance polymer alloy coating to prevent handling injury. The cover shall have a hinge on one end and a locking tab on the other end. The hinge shall be attached to mounting brackets with carriage bolts to allow removal of the cover from

the hinges. The mounting brackets shall be submerged into the concrete a minimum of two inches, positioning the cover one and one half inches above the concrete. The locking tab shall accept a padlock. Handles shall be attached to the sides to facilitate raising and lowering of the cover.